

## PIONEERING A NEW ERA IN POCUS

### Introducing the Kosmos Platform

The Kosmos Platform is a family of hardware, software, and advanced AI solutions designed to support every aspect of your point-of-care ultrasound needs.

**Top Tier Imaging** Kosmos imaging is benchmarked against advanced cart-based systems and delivers clinical clarity at the bedside. It is the only ultraportable device providing advanced feature sets such as PW & CW Doppler with TDI.

**Kosmos AI Solutions** Kosmos is enabled with extensive AI capabilities to help provide a more complete diagnosis at the bedside. It supports novice and advanced users with real-time probe positioning guidance, image grading, and auto-labeling while also providing automatic calculations ranging from a simple ejection fraction to complete complex systolic and diastolic function analysis and assessment of valve disease.

**Kosmos Universal Platform (UP)** Kosmos Up is a HIPAA-compliant online platform built to support ultrasound training and workflow efficiency by facilitating image archiving, quality assurance, and performance metrics.

## THREE PROBES – YOUR CHOICE



### TORSO-ONE Phased Array Probe

Provides high-definition ultrasound imaging with a small footprint and narrower grip for access in tight anatomical spaces, typically when imaging between ribs. Ideal for cardiac, lung, and abdominal exam types.



### LEXSA Linear Array Probe

A 38mm aperture for superficial anatomy, vascular, MSK and lung applications. Lexsa offers compound imaging capabilities for greater image clarity and better visualization of the needle for procedural guidance.



### TORSO Phased Array Probe

Truly see and hear your patients for the first time. Torso is a phased array transducer that provides exceptional image quality and real-time synchronization of three signals — a stethoscope, ECG, and ultrasound — all in one, easy-to-use handheld ultrasound system. Exam types include heart, lung, and abdomen.

# BUILT FOR REAL-LIFE PATIENT SITUATIONS

Patients inevitably come in all shapes and sizes, presenting with various pathologies. Kosmos was built with this in mind and tested to ensure high-

confidence imaging on the most challenging patients. The proof is in the images.

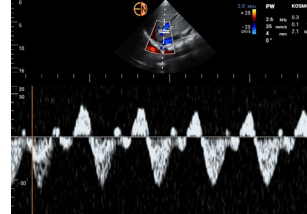
## Kosmos advanced features



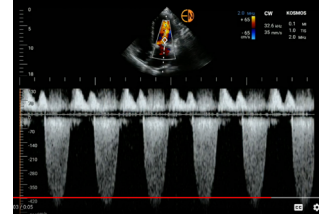
Top Tier Imaging – Cardiac



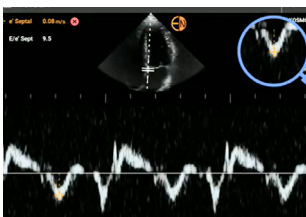
Top-Tier Imaging – abdominal



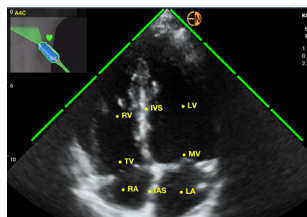
PW Doppler



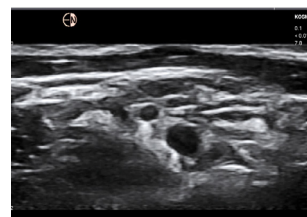
CW Doppler



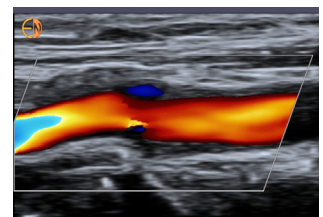
Tissue Doppler Imaging



Kosmos AI – TRIO



Superficial Imaging



Color Doppler Imaging



### Device compatibility

Compatible with the proprietary, ultrasecure Kosmos Bridge platform or select off the shelf mobile devices



### Durable

Survives 1 m drop, IP67 rated, and validated to cleaning, intermediate, and high-level disinfection



### 5-year warranty

Industry standard 5 year warranty for Lexsa and Bridge

Contact Cardiac Services for more information

Europa House, Adlington Business Park  
Macclesfield SK10 4NL  
t: 01625 878 999 | [echonous.com](https://echonous.com)



For US only: The Kosmos Trio tool, AI FAST, and AI- assisted EF workflow are released under the Enforcement Policy for Imaging Systems During the Coronavirus Disease 2019 (COVID-19) Public Health Emergency, Guidance for Industry and Food and Drug Administration Staff, April 2020 and have not been cleared by the FDA. These features are intended to be used by qualified healthcare professionals or under the supervision or in-person guidance of a trained or licensed healthcare professional.

©2023 EchoNous, Inc. EchoNous and KOSMOS are registered trademarks of EchoNous, Inc. D010610\_ REV B